

12-core central loose tube optical cable

OEM/ODM
CUSTOMIZATION AVAILABLE



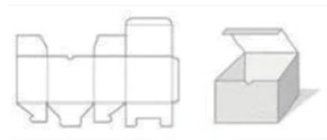
Full product customization



Structure customization



Brand customization



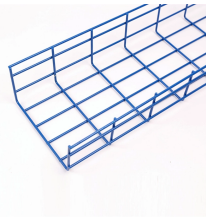
Packaging design



12-core central loose tube optical cable



Infinique Central Loose Tube Cables are suitable for both indoor and outdoor applications. They are designed not just to save space and time but also to further simplify fiber management by eliminating ...



CommScope Outside Plant Fiber Optic Drop cables are qualified to the ANSI/ICEA S-110-717-2002 Standard for Optical Fiber Drop Cable. RUS/RDUP: RD Telecommunications Program listed.



The cables are high-density, lightweight, and durable for easy handling and installations. ALTOS cables contain buffer tubes with either 12 or 24 single loose fibers for installer familiarity; in 24-fiber tube ...



Opti-Core® Gel-Free 12-fiber, Black colored indoor/Outdoor Cable is an integral part of the Panduit end-to-end fiber optic solution, designed to support today's data needs while meeting tomorrow's ever ...



Belden's Central Loose Tube Fiber Cables support indoor/outdoor use—including conduit, direct burial, aerial and trunking. Built with 250 μm fibers (2-24 count), they're offered in plenum, riser, ...



The Legrand Indoor/Outdoor fiber optic cable is easy to handle and resilient to hardships. It can be used for LAN and WAN backbones. It is equally suited for installation in ducts and on trays. It has an ...



- Central loose tube with thixotropic gel for water resistance and fiber protection
- Includes water swell-able tape, corrugated steel tape, rip cord, and HDPE jacket



12 Core GYXTC8Y Central Loose Tube Figure 8 Self-Supporting Aerial Outdoor Single Jacket Steel Wire Strength Fiber Optic Cables, suitable for installation in aerial environment for long haul ...



HOC unitube loose tube CST cable is using a corrugated steel tape strength member and water-blocking fiber glass yarn around the central unitube of 4-24 core fibre. This kind of reinforcement ...



Fiber Optic Outside Plant Cable, 12-core, ECSS (Electro Chrome Coated Steel) Armored, Loose-tube, Gel-filled, 9/125 μm , OS2, Singlemode, Black cable jacket



12 Core GYXTC8Y Central Loose Tube Figure 8 Self-Supporting Aerial Outdoor ...

Contact Us

For more information, pricing, or custom network solutions, please contact us:

Website: <https://www.hashherbcafe.co.za>

Email: hello@hashherbcafe.co.za

Phone: +27 63 814 7295

Address: 15 Galaxy Road, Linbro Business Park, Johannesburg, 2065, South Africa

This document is for informational purposes only. Specifications subject to change without notice.

