

100base-tx multimode fiber



100base-tx multimode fiber



The MC100CM is a media converter designed to convert 100BASE-FX fiber to 100Base-TX copper media or vice versa. Designed under IEEE 802.3u 10/100Base-TX and 100Base-FX standards, the ...



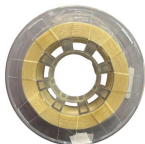
The MC100CM is a media converter designed to connect 100BASE-FX fiber to 100Base-TX copper and vice versa. Complies with IEEE 802.3u 10/100Base-TX and 100Base-FX standards, the MC100CM is ...



The unmanaged media converter provides an interface between 10/100BASE-TX RJ45 ethernet and 100BASE-FX multimode ST ports. This allows the user to integrate fiber optics into a copper ...



This media converter 10/100base-tx to 100base-fx supports multimode fiber connections with ST connectors, offering reliable, high-speed connectivity up to 2 kilometers in industrial and commercial ...



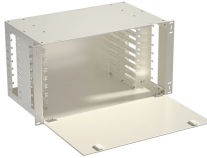
The easy implementation and expansion of 10/100Base-TX/FX networks can be further assured with this converter. This converter is completely transparent when connected so the network performs exactly ...



This converter is a Multi Mode MT-RJ Type fiber converter spanning distances up to 2km (1.2 miles). Ports include 1 x 10/100Base-TX (RJ-45) port and 1 x 100Base-FX fiber port (MT-RJ Type).



This converter is a Multi Mode ST-Type fiber converter spanning distances up to 2km (1.2 miles). Ports include 1 x 10/100Base-TX (RJ-45) port and 1 x 100Base-FX fiber port (ST-Type). All references to ...



The SBFTF Series is a that provides an interface between 10/100Base-TX ports and 100Base-FX ports, allowing users to integrate fiber optic cabling into 10/100 copper environments.



The N784-001-ST 10/100 Multimode Media Converter is an economical way to extend the distance (up to 2 kilometers) of network nodes by converting Cat5/6 UTP cables to Fiber Optic.



In summary, the key specifications of a 100BASE FX SFP—100Mbps speed, 1310nm wavelength, up to 2km reach, multimode fiber compatibility, and defined temperature ratings—directly determine its ...

Contact Us

For more information, pricing, or custom network solutions, please contact us:

Website: <https://www.hashherbcafe.co.za>

Email: hello@hashherbcafe.co.za

Phone: +27 63 814 7295

Address: 15 Galaxy Road, Linbro Business Park, Johannesburg, 2065, South Africa

This document is for informational purposes only. Specifications subject to change without notice.

